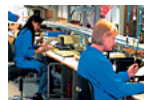


A Yokogawa Commitment to Industry  
**vigilance**<sup>®</sup>



# ISA-95を用いたERPと MESの統合

2008/5/19 ISA-95 (IEC62264) チュートリアル

IA事業部プロダクションエクセレンスセンター  
MESグループ 川村 春久

**横河電機株式会社**

- ⇒ SAP-Yokogawaパートナーシップの経緯とINTERKAMA 2005での統合デモ
- ⇒ B2MMLインタフェースツールMDX
- ⇒ IMC 2007での設備管理システムとの連携デモ



# SAP-Yokogawa パートナーシップの経緯と INTERKAMA 2005での統合デモ

## ❖ SAP

- 2004年 ISA-95とB2MML (Business To Manufacturing Markup Language)のサポートを発表。
- SAP eXchange Infrastructure (SAP XI)の中でB2MMLを使用したISA-95パッケージを開発。

## ❖ Yokogawa :MES-ERP統合の基盤としてISA-95をサポート

- SP95委員会のメンバー
- WBF (**World Batch Forum**)にて、B2MMLの作成

## ❖ パートナーシップ

- 2004年からB2MML関連で非公式に連携活動を継続
- 2005年パートナーシップ協定の正式調印
- Interkama 2005にてmySAP ERPとYokogawa MESとの統合デモ実施
- B2MMLインタフェイスツールのMDXがSAP 2006の認証を取得

## ❖ ハノーバーメッセ2005

- 2005/04/11～04/15 ドイツ北部のハノーバー市で世界最大の産業見本市
- 11の専門分野別展示会
- 3つのIndustrial Automation関連展示会: 約1,800社が出展
  - 製造業向けITソリューション展示会のDigital Factory
  - FA分野の展示会 Factory Automation
  - PA分野の展示会 **INTERKAMA 2005**

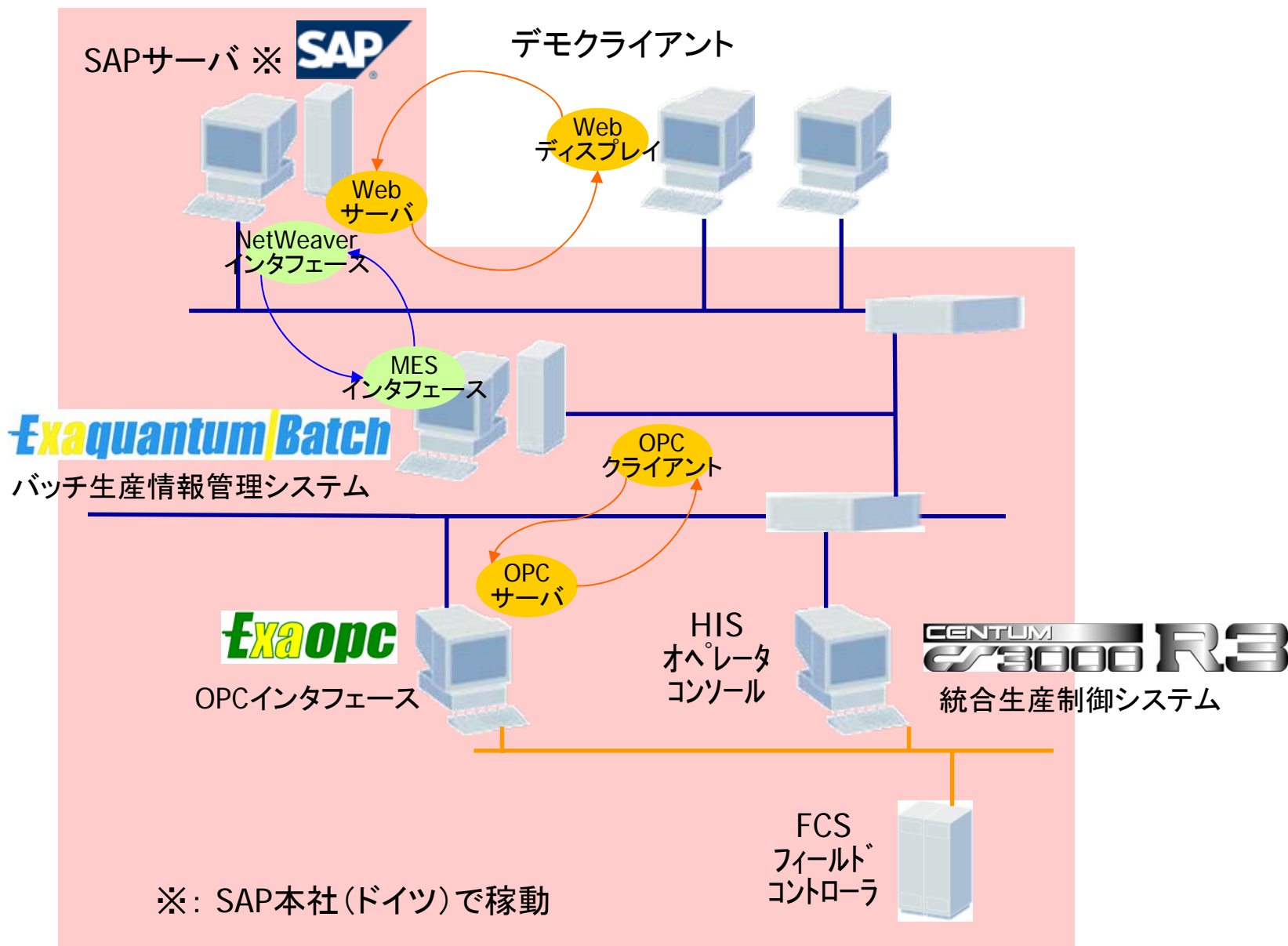
### Yokogawaブース

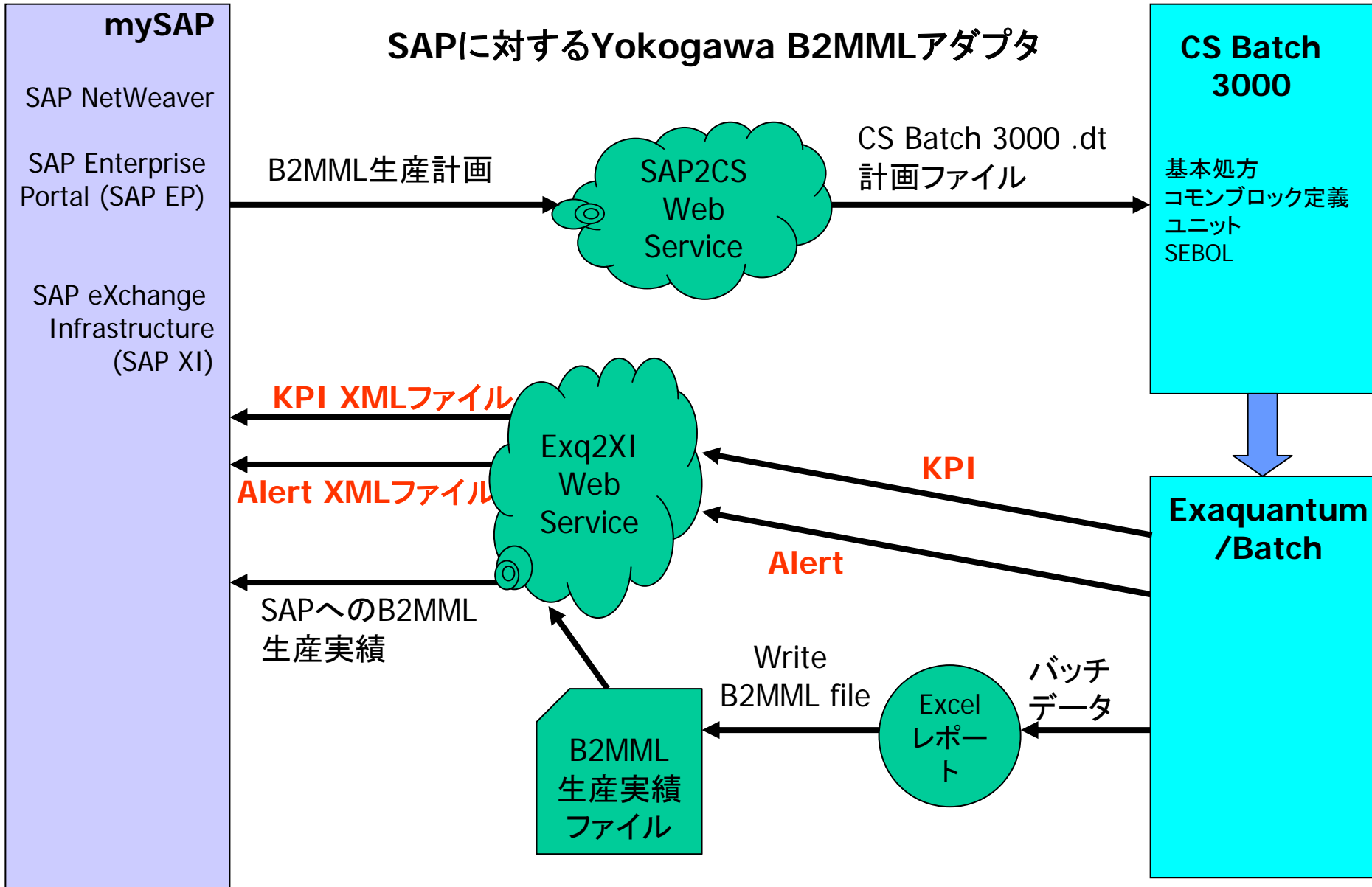


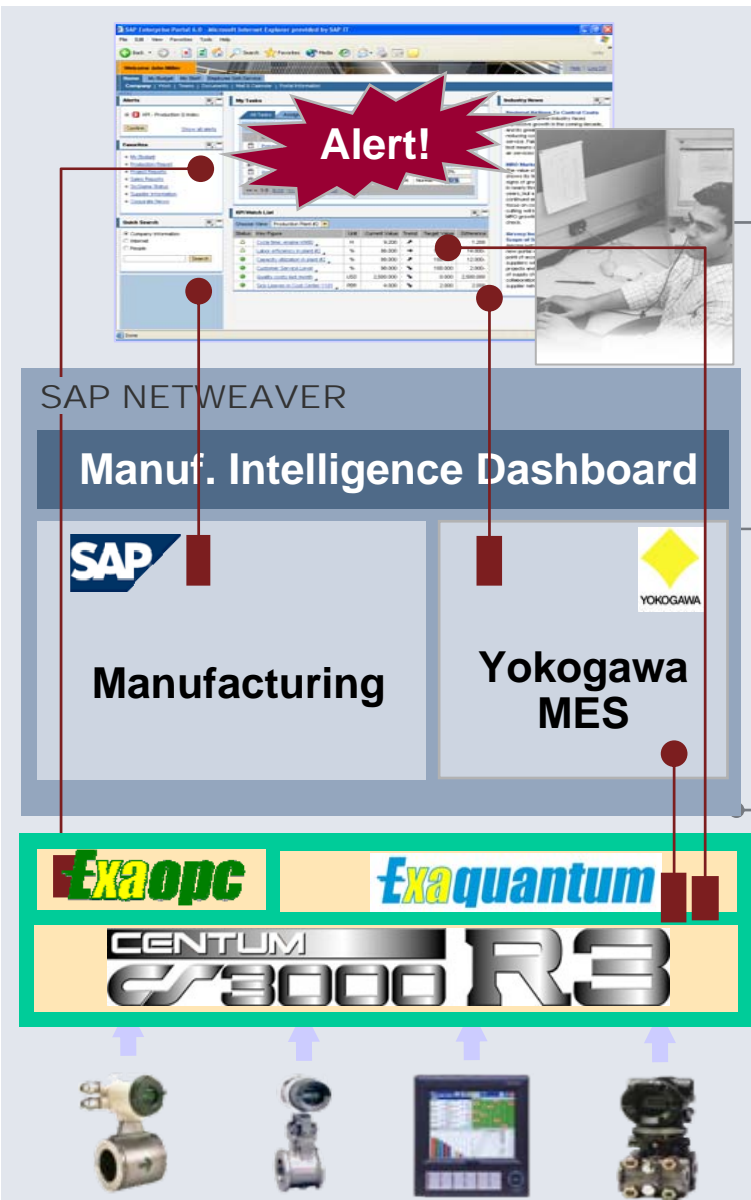
### SAPブース

### SAPブース内 Yokogawa コーナー









製造業向けインテリジェンスダッシュボード: 役割ベース/カスタマイズ可能なダッシュボード、アラート/KPIによる意思決定サポート(mySAP ERPの一部)

生産指示: 生産計画/実行/品質/保守/環境保全(mySAP ERP)

生産統合: SAP NetWeaverプラットフォームを用いたSAPとYokogawa MESアプリケーションの統合



Overview - SAP Enterprise Portal 6.0 - Microsoft Internet Explorer

Address: http://idesportalnwdh.wdf.sap.corp:1080/irj/portal

Welcome Plant Manager

Plant Management Overview | Reports | Production Control

Alerts

- Review Batch Status
- Review production Status

Links List

- Business Week
- CNN Business
- CNN Politics
- SAP
- Wall Street Journal

Company News

- The Insider Trade for World Class Enterprises - Thomsonfn.com
- World Class Enterprises Financials - EDGAR Online Financials
- World Class Enterprises Announces Fourth Quarter Results - Business Wire
- World Class Enterprises Q4 Earnings Release - After Market

Overview


KPI Watch List

Choose View: Morning Check | Define Views | Personalize KPIs

Status	Key Figure	Unit	Current Value	Trend	Target Value	Difference	Difference [%]	Time Stamp
🔴	Batch cycle time to target	%	0,000	➡	100,000	100,000-	100,00-	08.04.2005 17:46
🔴	Overall equipment effectiveness	%	0,046	➡	80,000	79,952-	99,94-	08.04.2005 17:40
🔴	Premix Tank 1 Utilization	%	0,024	➡	95,000	94,976-	99,98-	08.04.2005 17:40
🔴	Premix Tank 2 Utilization	%	0,001	➡	95,000	94,999-	100,00-	08.04.2005 17:40
🔴	Reactor 1 Utilization	%	0,006	➡	85,000	84,994-	99,99-	08.04.2005 17:40
🔴	Reactor 2 Utilization	%	0,003	➡	85,000	84,997-	100,00-	08.04.2005 17:40
🟢	Actual Yield to target	%	82,000	➡	83,000	1,000-	1,21-	08.04.2005 17:40
🟢	Cost Performance to target	%	95,000	➡	100,000	5,000-	5,00-	08.04.2005 17:46
🟢	Product Quality to target	%	78,000	➡	80,000	2,000-	2,50-	08.04.2005 17:40

Refresh

SAP-Yokogawa Digital Factory



SAP vigilantplant™

Error on page.

Local intranet

Change Process Order - SAP Enterprise Portal 6.0 - Microsoft Internet Explorer

Address: http://idesportalnhwdh.wdf.sap.corp:1080/irj/portal

Welcome Plant Manager

Plant Management  
 Overview | Reports | Production Control

Change Process Order | History | Back | Forward

Detailed Navigation

- Control Recipe Monitor
- Create Process Order
- Change Process Order**
- Display Process Order
- Downloaded Production Orders
- Shop Floor Overview
- Electronic Batch Record
- Quality Performance
- Maintenance Requested
- Stock Overview
- Cost Performance
- Overall Equipment Effectiveness
- Asset Utilization
- Yield

### Change Process Order: Header - Dates/Quantities

Menu: Save | Back | Cancel | Tools | Release | Schedule order | Determine costs | Create control recipe | Material | Capacity | WM material staging | More

Process order: 70001436 | Type: PI01  
 Material: COUGH-200 | lvy Cough Syrup | Plant: 1100  
 Status: REL CRCR PRC BCRQ MACM PIGN SETC

General data | Assignment | Goods receipt | Control data | **Dates/qty** | Mast. data | Administr. | Customer Screen | SAP Event Mgmt

	Release	Start	Finish	
Planned order				
Basic dates		04.04.2005	23:00:23	08.04.2005 16:10:23
Scheduled	30.03.2005	06.04.2005	23:00:23	07.04.2005 16:10:23
Confirmed dates	04.04.2005		00:00:00	00:00:00
Overall commitment				08.04.2005
Actual finish date				

	Quantity	Unit	Scrap
Planned order	0	KG	0
Order	100	KG	
Delivered	0		
Committed qty	100		

Control Recipe Monitor - SAP Enterprise Portal 6.0 - Microsoft Internet Explorer

File Edit View Favorites Tools Help

Address http://idesportalnwdh.wdf.sap.corp:1080/irj/portal

Welcome Plant Manager

Collaboration | Search | Advanced Search

Plant Management

Overview | Reports | Production Control

Control Recipe Monitor | History | Back | Forward

Detailed Navigation

- Control Recipe Monitor
  - Create Process Order
  - Change Process Order
  - Display Process Order
  - Downloaded Production Orders
  - Shop Floor Overview
  - Electronic Batch Record
  - Quality Performance
  - Maintenance Requested
  - Stock Overview
  - Cost Performance
  - Overall Equipment Effectiveness
  - Asset Utilization
  - Yield

Display Control Recipe

Plant: 1100

From: 08.03.2005

To: 07.05.2005

Display

Send Control Recipe Data

Control recipe ID	Plant	Process order	Description	Material number	Material	Inspection lot	Batch	Scheduled start date	Scheduled start time	De
100000000000003142	1100	70001431	Ivy Cough Syrup	COUGH-100	Ivy Cough Syrup	000000000000		04.04.2005	22:57	08
100000000000003143	1100	70001432	Ivy Cough Syrup	COUGH-100	Ivy Cough Syrup	000000000000		04.04.2005	22:58	08
100000000000003144	1100	70001433	Ivy Cough Syrup	COUGH-100	Ivy Cough Syrup	000000000000		04.04.2005	22:58	08
100000000000003145	1100	70001434	Ivy Cough Syrup	COUGH-200	Ivy Cough Syrup	000000000000		06.04.2005	22:59	08
100000000000003146	1100	70001435	Ivy Cough Syrup	COUGH-200	Ivy Cough Syrup	000000000000		06.04.2005	22:59	08
100000000000003147	1100	70001436	Ivy Cough Syrup	COUGH-200	Ivy Cough Syrup	000000000000		06.04.2005	23:00	08

Page 1 of 1

Send



The screenshot displays the SAP Enterprise Portal 6.0 interface for Shop Floor Overview. The browser window title is "Shop Floor Overview - SAP Enterprise Portal 6.0 - Microsoft Internet Explorer". The address bar shows the URL: <http://desportalnwdh.wdf.sap.corp:1080/irj/portal>. The interface includes a navigation menu on the left with options like "Control Recipe Monitor", "Create Process Order", and "Shop Floor Overview". The main content area shows a "YEF-PLANT Batch Demonstration" window with a "PLANT OVERVIEW" diagram. This diagram illustrates a production process involving four tanks (P1, P2, R1, R2) and various pumps (PURP-A, PURP-B, PURP-C, PURP-E, PURP-L) and valves (HV-A, HV-B, HV-C, HV-D, HV-E, HV-101, HV-201, HV-301, HV-401, HV-102, HV-202, HV-302, HV-402). The tanks are labeled with their product status (e.g., "STATUS STOP") and batch ID. At the bottom of the diagram, there are tabs for "PTK1 Graphic", "PTK2 Graphic", "R1/R1 Graphic", "R2/R2 Graphic", "Overview", "Ingredients", "Product Tanks", and "Recipe". The status bar at the bottom of the diagram window shows "Ready". The overall interface is branded with "vigilantplant" and "YOKOGAWA" logos.

Electronic Batch Record - SAP Enterprise Portal 6.0 - Microsoft Internet Explorer

Address: http://idesportalnwdh.wdf.sap.corp:1080/irj/portal

Welcome Plant Manager

Plant Management | Overview | Reports | Production Control

Electronic Batch Record | History | Back | Forward

Exaquantum / Batch | Welcome quantumuser

Batch Equipment Recipe Reports Plant View | Settings About

Related Views

- Batch Gantt Chart
- Cycle Time Chart
- Formula Items
- Performance Rating Freq. Chart
- Batch Summary
- Cycle Time Freq. Chart
- Manual Performance Rating Entry
- Report Template
- Batch Trend Selection
- Events
- Performance Rating Chart
- Unit Recipe List

Edit Related Links

Batch List

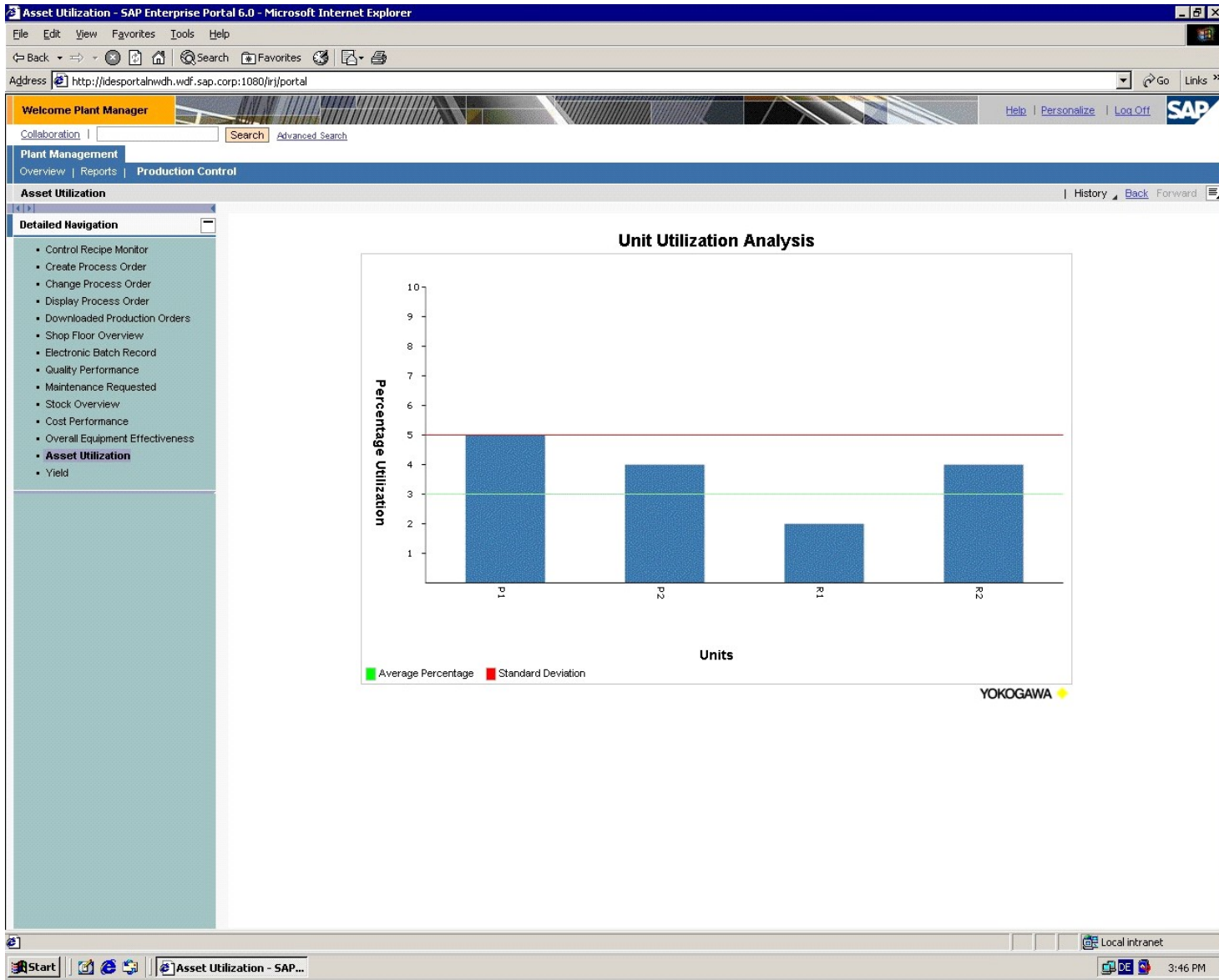
Printer Friendly Version

Batch	Master Recipe ID	Master Recipe Name	Product	Start	End	Rating
<input checked="" type="checkbox"/> 050324-01-04-MB	01:0008	COUGH-100	Cough Syrup	3/24/2005 1:24:40 PM	3/24/2005 1:34:00 PM	070
<input type="checkbox"/> 050323-01-28-RG1	01:0008	COUGH-100	Cough Syrup	3/23/2005 11:13:31 PM	3/23/2005 11:22:53 PM	070
<input type="checkbox"/> 050323-01-30-RG1	01:0008	COUGH-100	Cough Syrup	3/23/2005 6:48:46 PM	3/23/2005 6:58:09 PM	085
<input type="checkbox"/> 050323-01-29-RG1	01:0008	COUGH-100	Cough Syrup	3/23/2005 6:28:03 PM	3/23/2005 6:38:21 PM	075
<input type="checkbox"/> 050323-01-27-RG1	01:0008	COUGH-100	Cough Syrup	3/23/2005 6:04:43 PM	3/23/2005 6:13:17 PM	085
<input type="checkbox"/> 050323-01-26-RG1	01:0008	COUGH-100	Cough Syrup	3/23/2005 5:33:11 PM	3/23/2005 5:49:44 PM	040
<input type="checkbox"/> 050323-01-24-RG1			Cough Syrup	3/23/2005 5:12:50 PM	3/23/2005 5:28:29 PM	
<input type="checkbox"/> 0249	01:0007	COUGH-100	COUGH-100	3/22/2005 10:46:43 PM	3/22/2005 10:47:00 PM	
<input type="checkbox"/> 050322-01-16-MB	01:0007	COUGH-100	COUGH-100	3/22/2005 10:34:14 PM	3/22/2005 10:34:27 PM	
<input type="checkbox"/> 050322-01-11-MB	01:0007	COUGH-100	COUGH-100	3/22/2005 8:41:35 PM	3/22/2005 8:41:48 PM	
<input type="checkbox"/> 050321-01-03-MB	01:0007	PROD300	Polymere A	3/22/2005 6:31:49 PM	3/22/2005 6:32:22 PM	

1

Filtered List | Selected Items

Select / Clear All | Add to MyList | Rows: 15



## – 生産品質向上

- CS Batch 3000で検出された生産品質の偏差は、SAP EP上でリアルタイムに生産管理、表示される。

## – 効率改善

- プラント管理者へ報告されるバッチサイクルタイム等のKPIは効率改善の指標を示す。

## – 安定・安全操業

- プラント/生産管理者は、1スクリーン上で関連のある全ての生産現場情報をドリルダウンしながら確認する事ができる。これは、例外を事前に検知し、事故や高額な処置の未然防止に繋がる。



# B2MMLインタフェースツール MDX Manufacturing Data Exchange



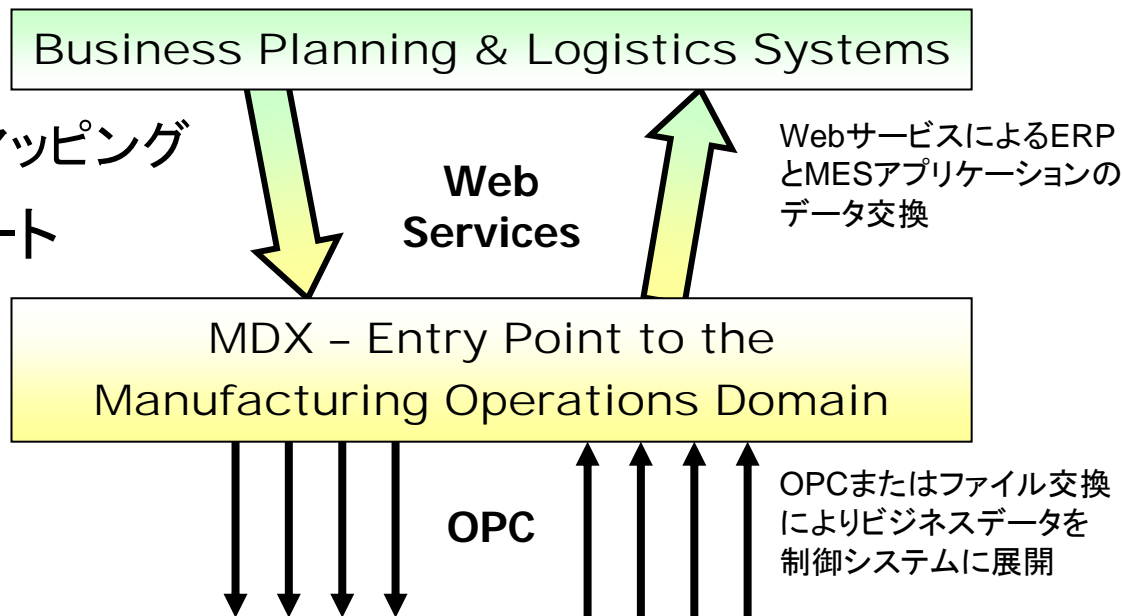


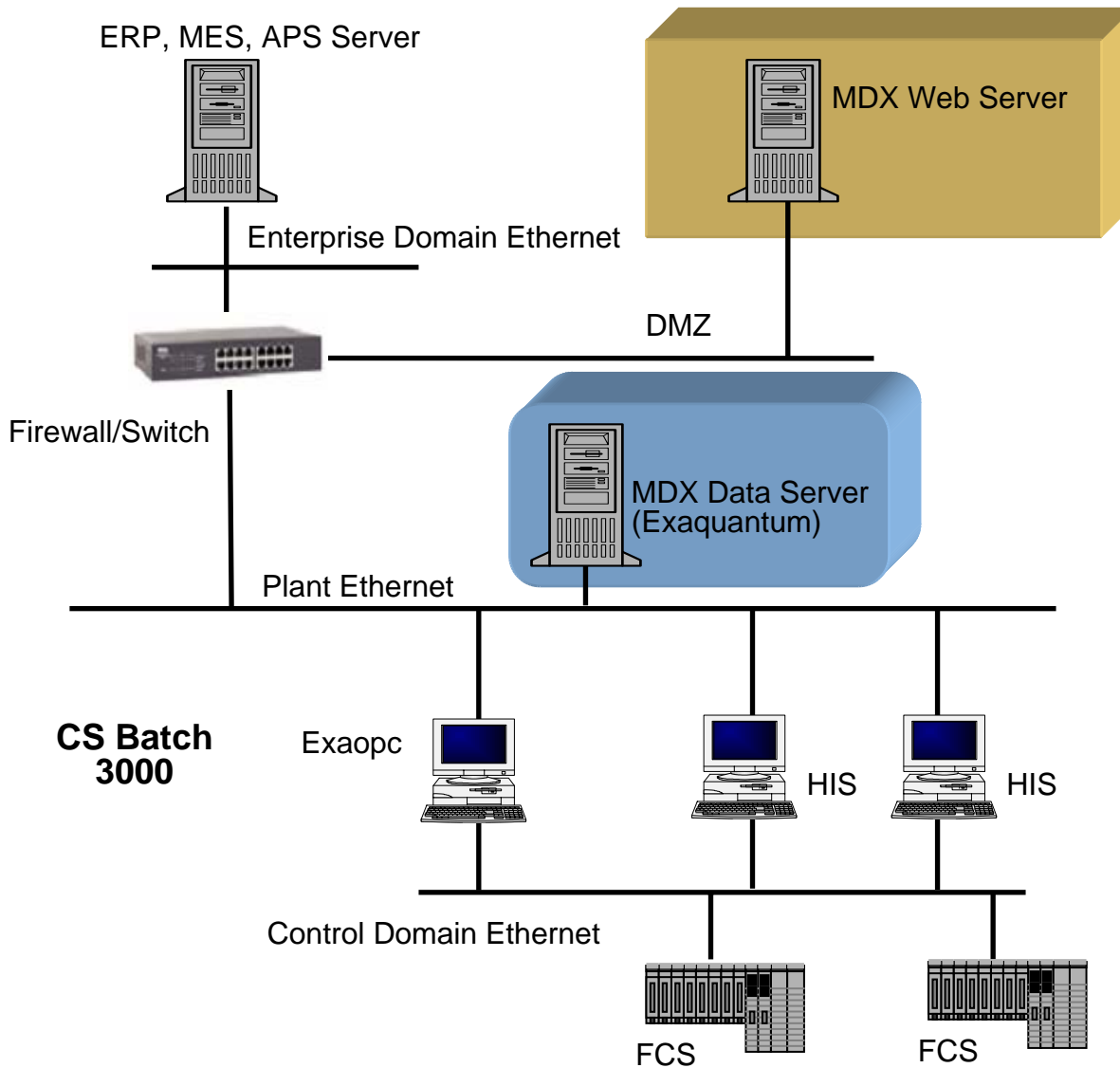
## MDXとERP統合のプラットフォーム

- Webサービス
- 拡張性
- OPC準拠システムとのマッピング

## 各種情報交換のサポート

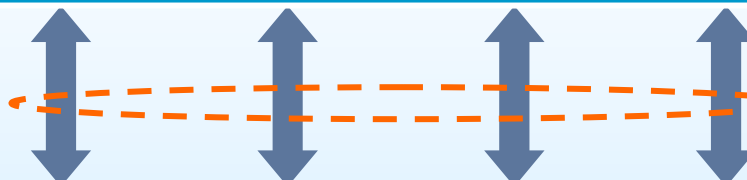
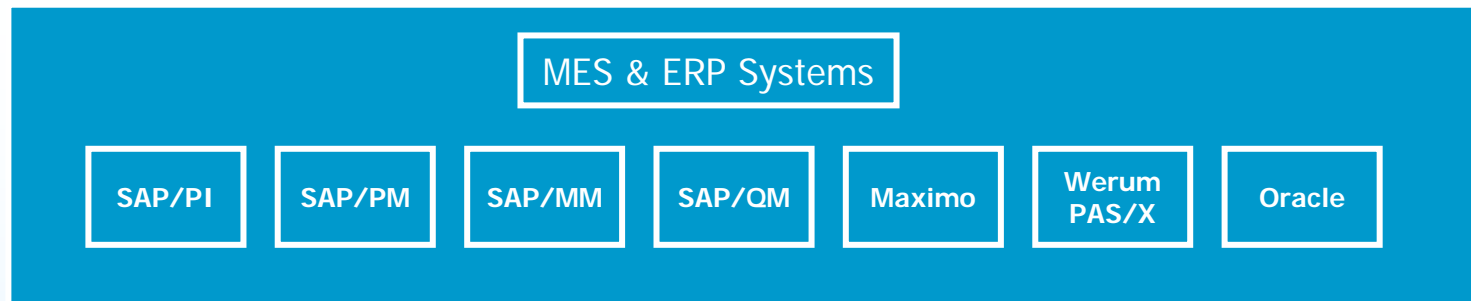
- SAPアラート及びKPI通知
- ISA-95/B2MML
  - 生産計画
  - 生産実績



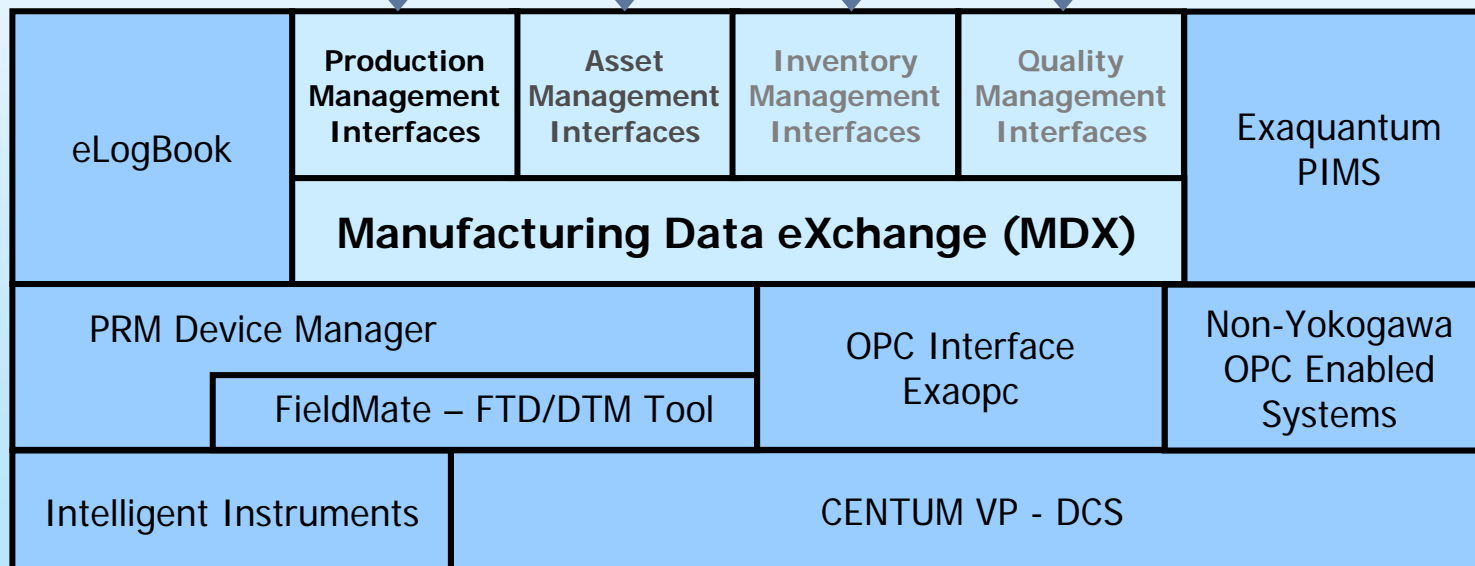


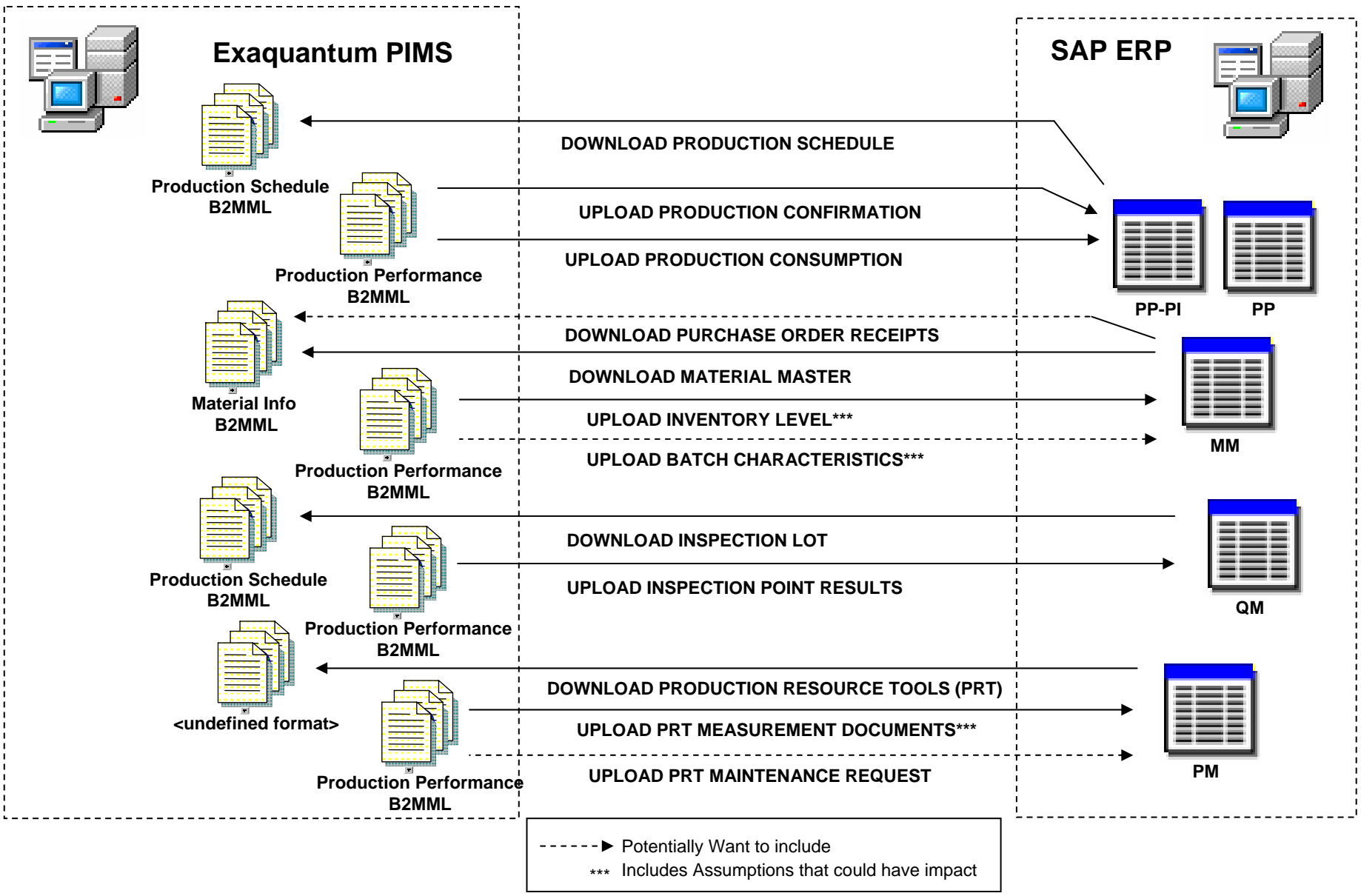
MDX WebサーバとMDX Dataサーバの分離を推奨

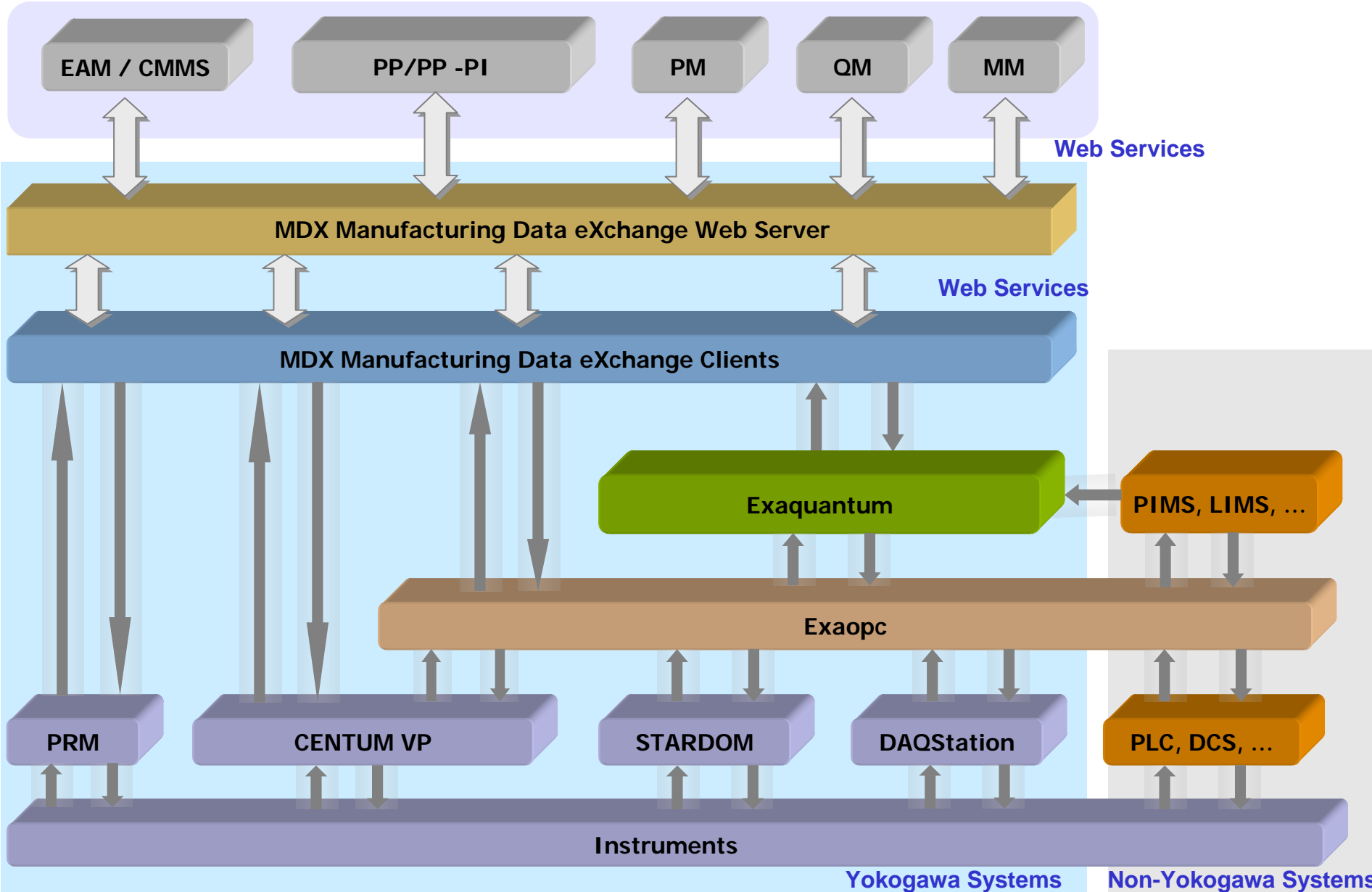
- WebサーバをDMZに設置
- Dataサーバは非公開

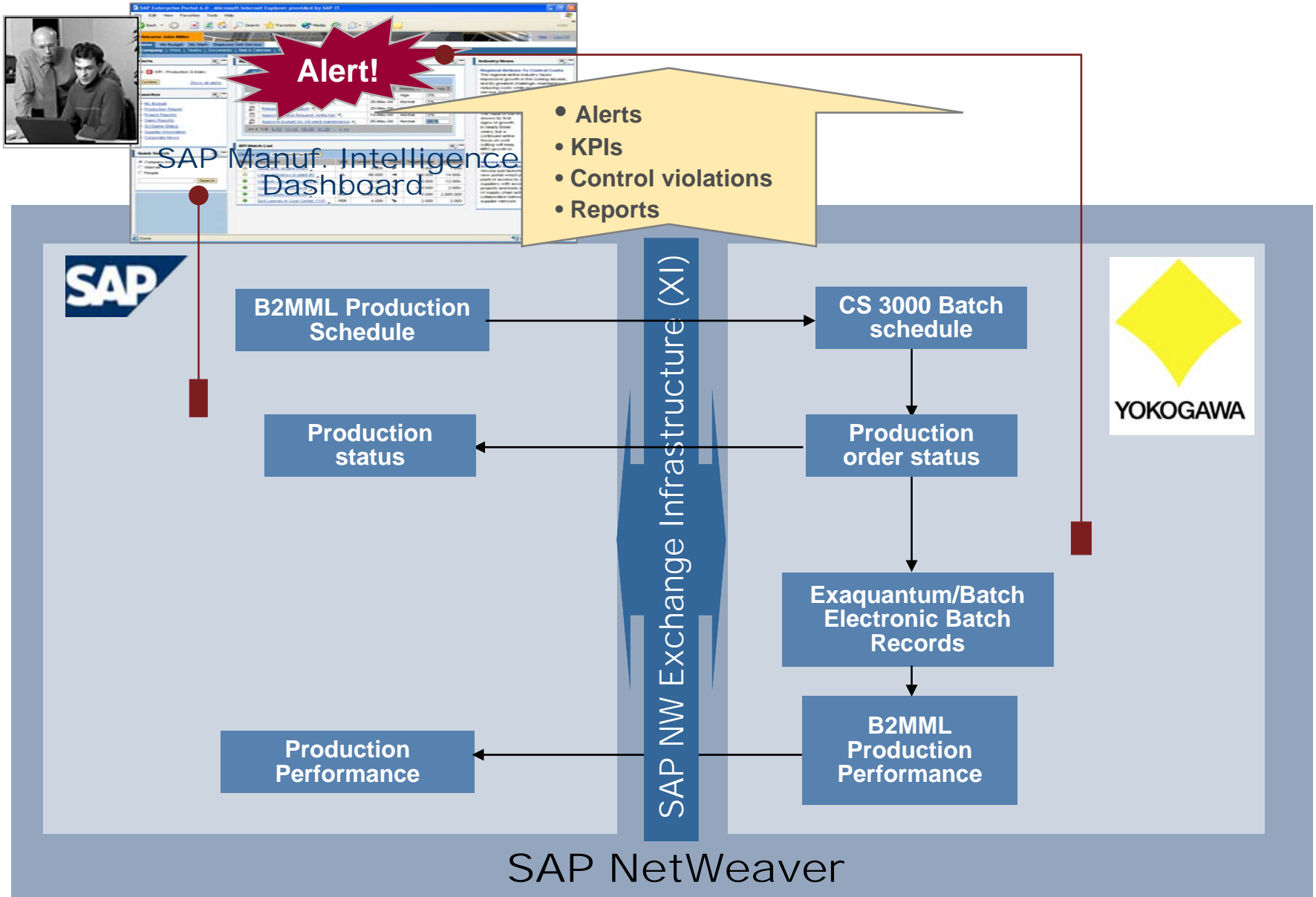


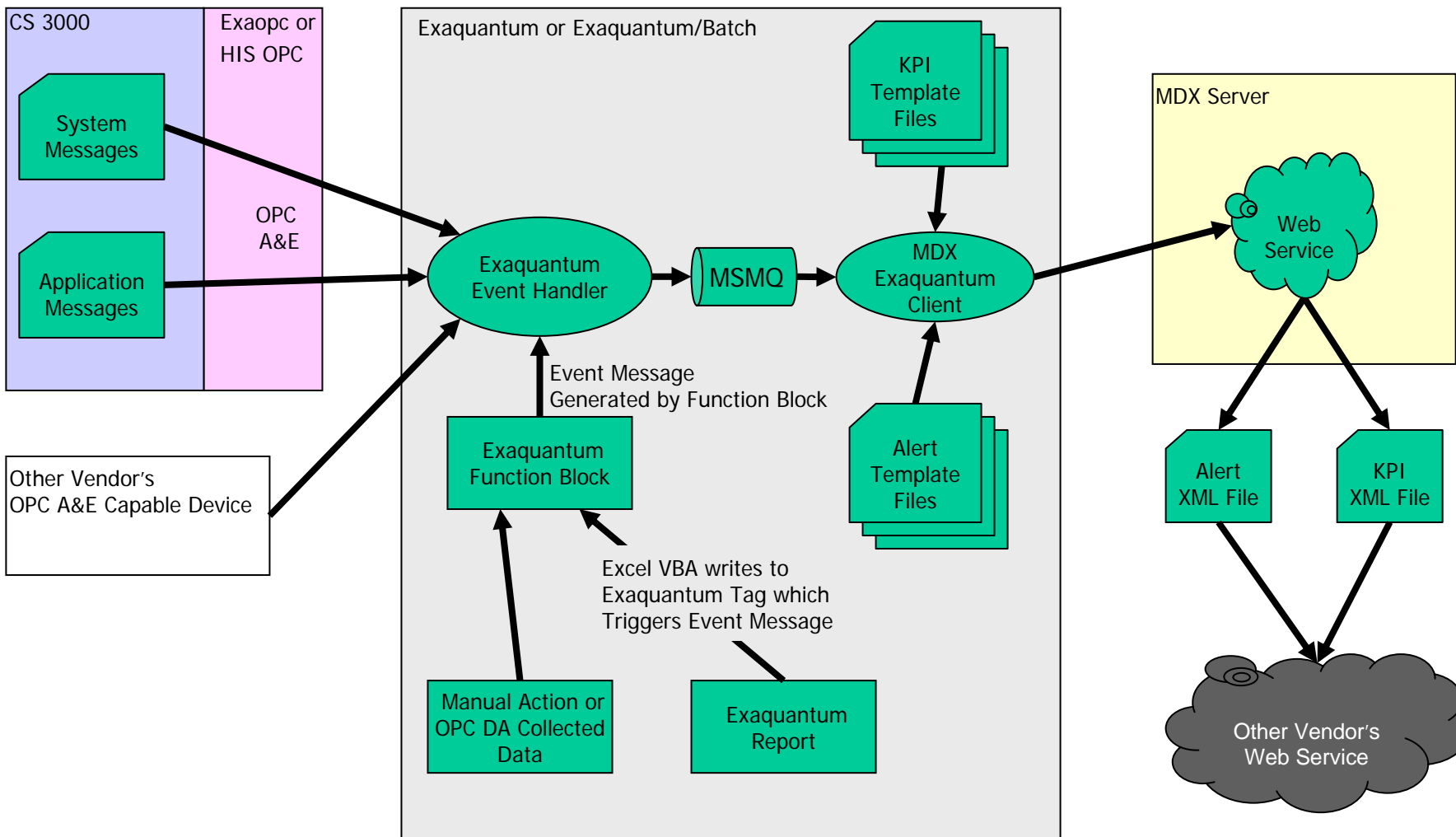
標準準拠のWebサービス  
インタフェース

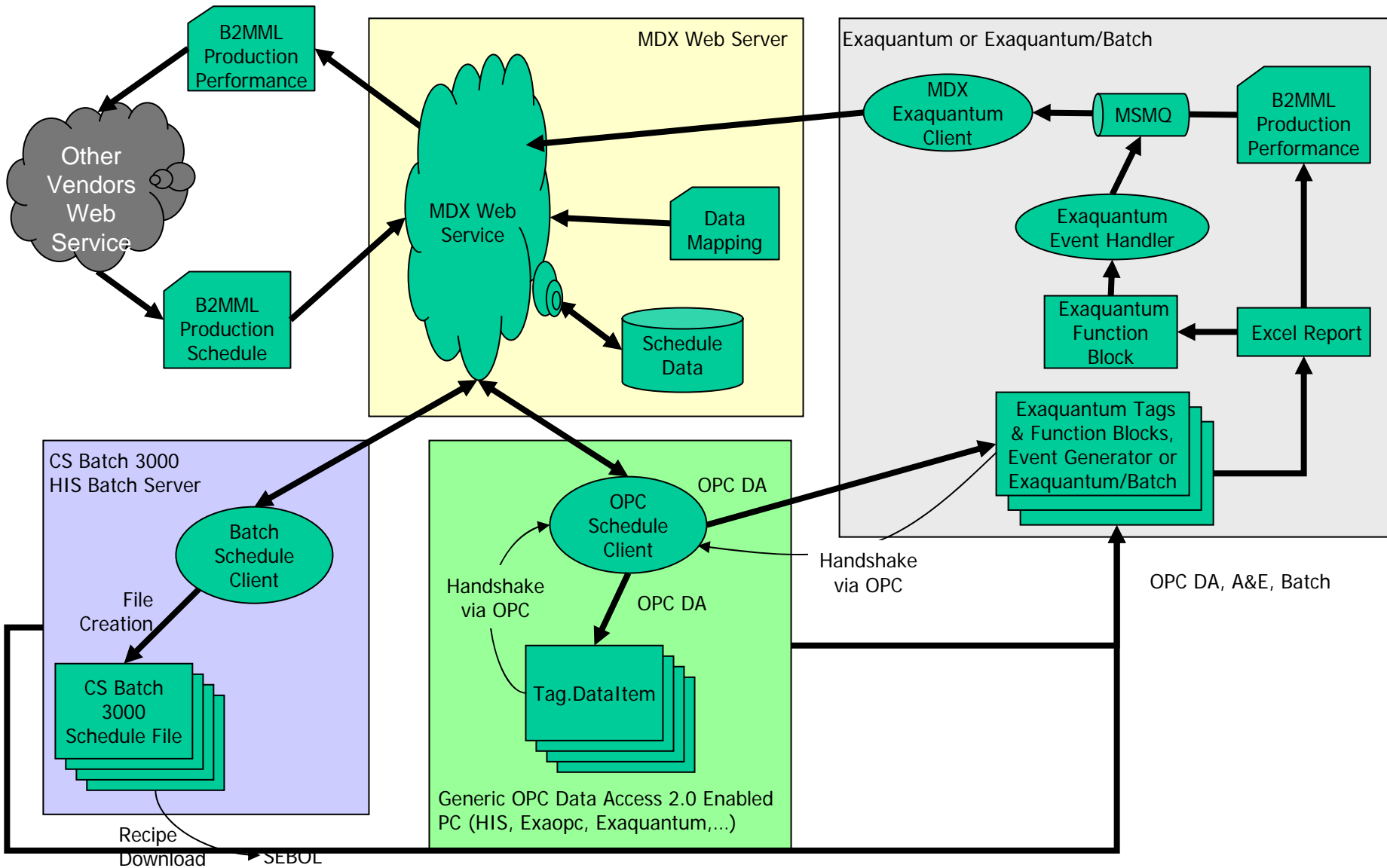








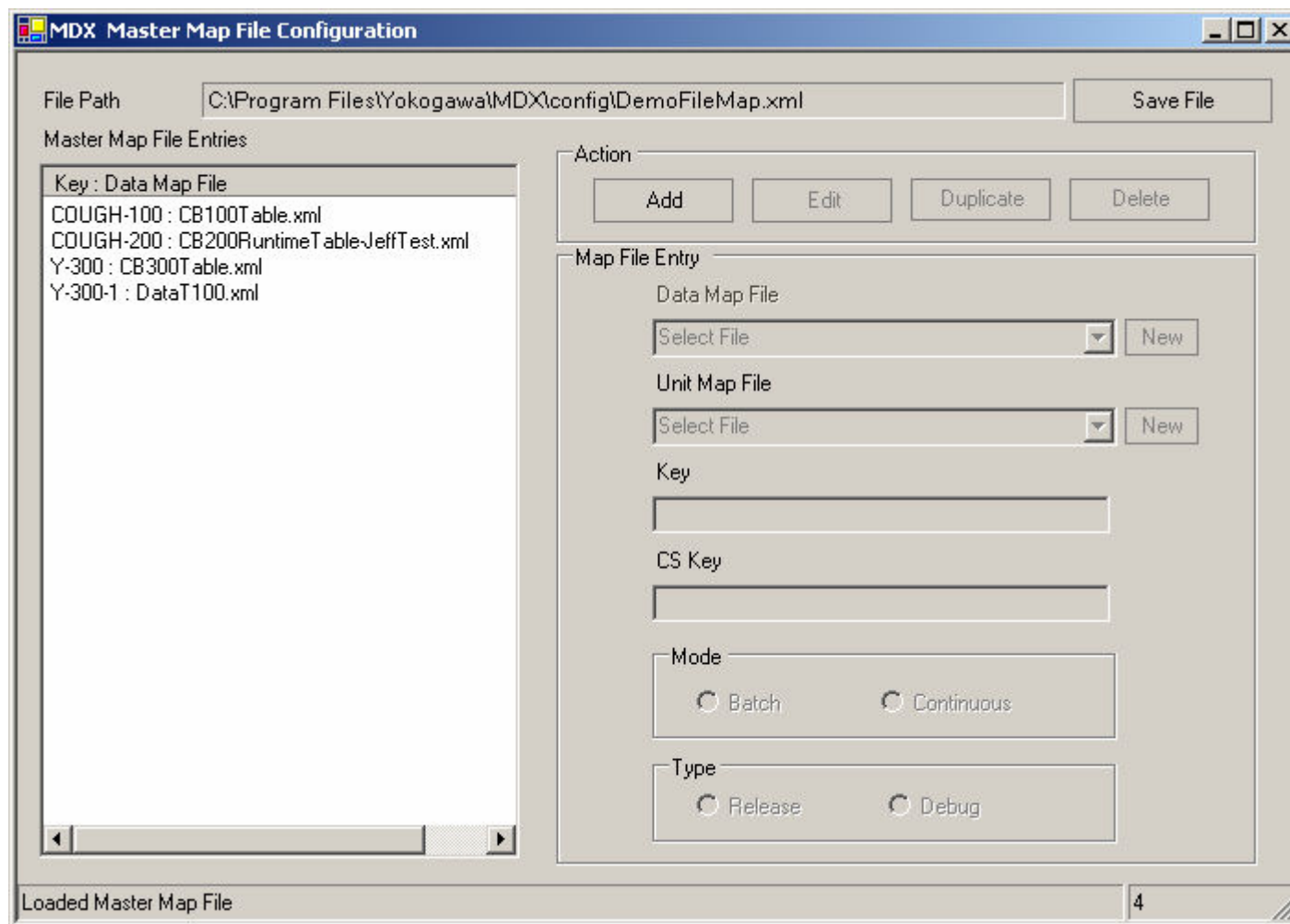






The screenshot shows the MDX Data Map Builder interface. On the left is a tree view of the data model. In the center, a 'Map Item Picker' dialog box is open, showing a search for 'STATUS' under the 'Batch Schedule' category. On the right, a table displays the mapping results.

Data Item Mapping	B2MML Value	Reference &ID
*	1010	1-1-1-0-1 : ProductionSchedule.ProductionRequest.
*	Charge input substances	1-1-1-0-2 : ProductionSchedule.ProductionRequest.
	R_1111	1-1-1-0-3 : ProductionSchedule.ProductionRequest.
	1100	1-1-1-0-3 : ProductionSchedule.ProductionRequest.
	Site	1-1-1-0-3 : ProductionSchedule.ProductionRequest.
	300-110	1-1-1-0-4 : ProductionSchedule.ProductionRequest.
	Aqua destillata	1-1-1-0-4 : ProductionSchedule.ProductionRequest.
	1100	1-1-1-0-4 : ProductionSchedule.ProductionRequest.
	Site	1-1-1-0-4 : ProductionSchedule.ProductionRequest.
	2008.8	1-1-1-0-4 : ProductionSchedule.ProductionRequest.
	float	1-1-1-0-4 : ProductionSchedule.ProductionRequest.
	L	1-1-1-0-4 : ProductionSchedule.ProductionRequest.
	OrderItem	1-1-1-0-4 : ProductionSchedule.ProductionRequest.
	0010	1-1-1-0-4 : ProductionSchedule.ProductionRequest.
	integer	1-1-1-0-4 : ProductionSchedule.ProductionRequest.
	Unit	1-1-1-0-4 : ProductionSchedule.ProductionRequest.
	300-120	1-1-1-0-5 : ProductionSchedule.ProductionRequest.
	Diaminobenzene	1-1-1-0-5 : ProductionSchedule.ProductionRequest.
	1100	1-1-1-0-5 : ProductionSchedule.ProductionRequest.
	Site	1-1-1-0-5 : ProductionSchedule.ProductionRequest.
	2791.2	1-1-1-0-5 : ProductionSchedule.ProductionRequest.
	float	1-1-1-0-5 : ProductionSchedule.ProductionRequest.
	KG	1-1-1-0-5 : ProductionSchedule.ProductionRequest.
	OrderItem	1-1-1-0-5 : ProductionSchedule.ProductionRequest.
	0020	1-1-1-0-5 : ProductionSchedule.ProductionRequest.
	integer	1-1-1-0-5 : ProductionSchedule.ProductionRequest.
	Unit	1-1-1-0-5 : ProductionSchedule.ProductionRequest.



# IMC 2007での 設備管理システムとの連携デモ

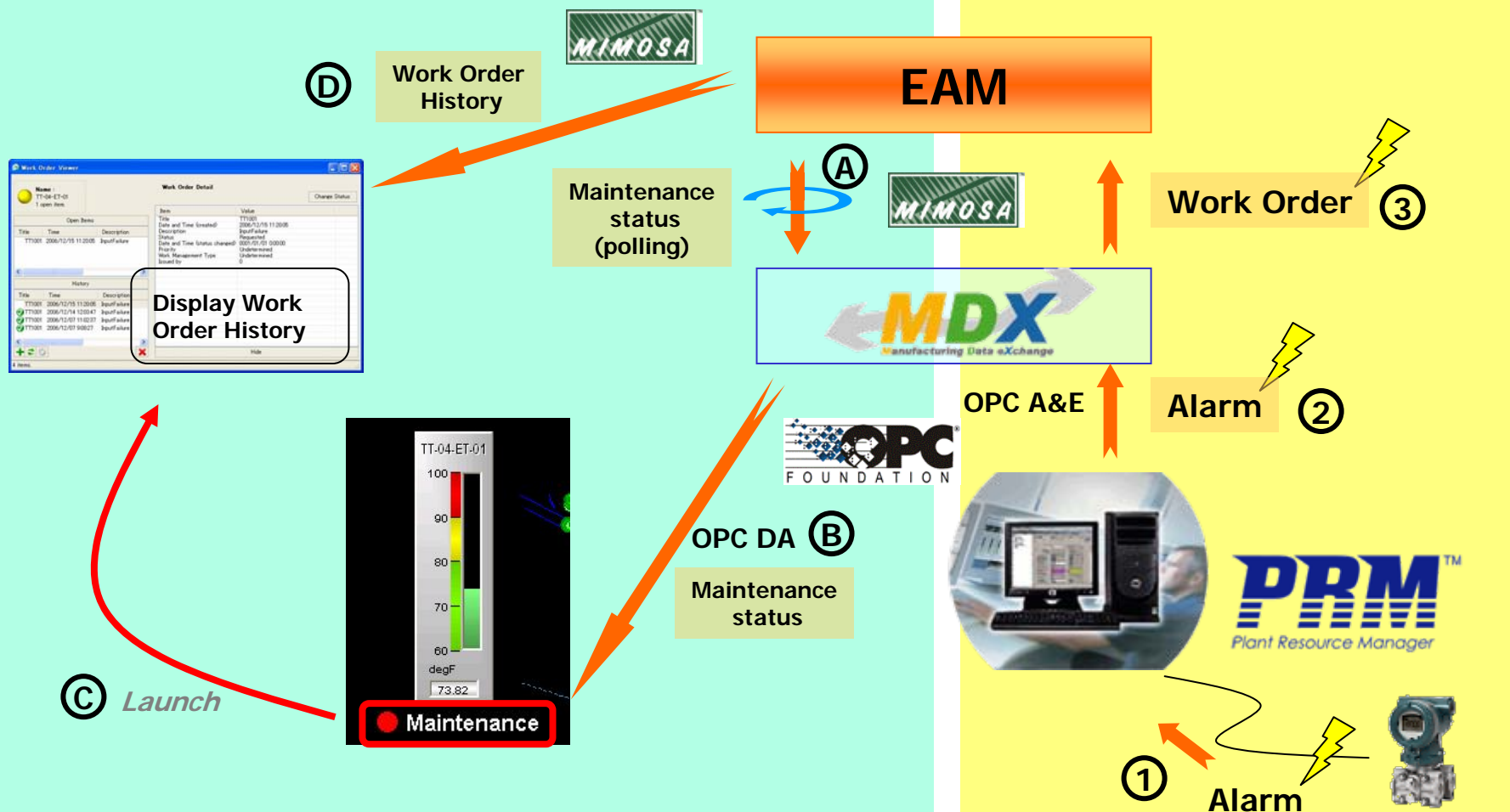


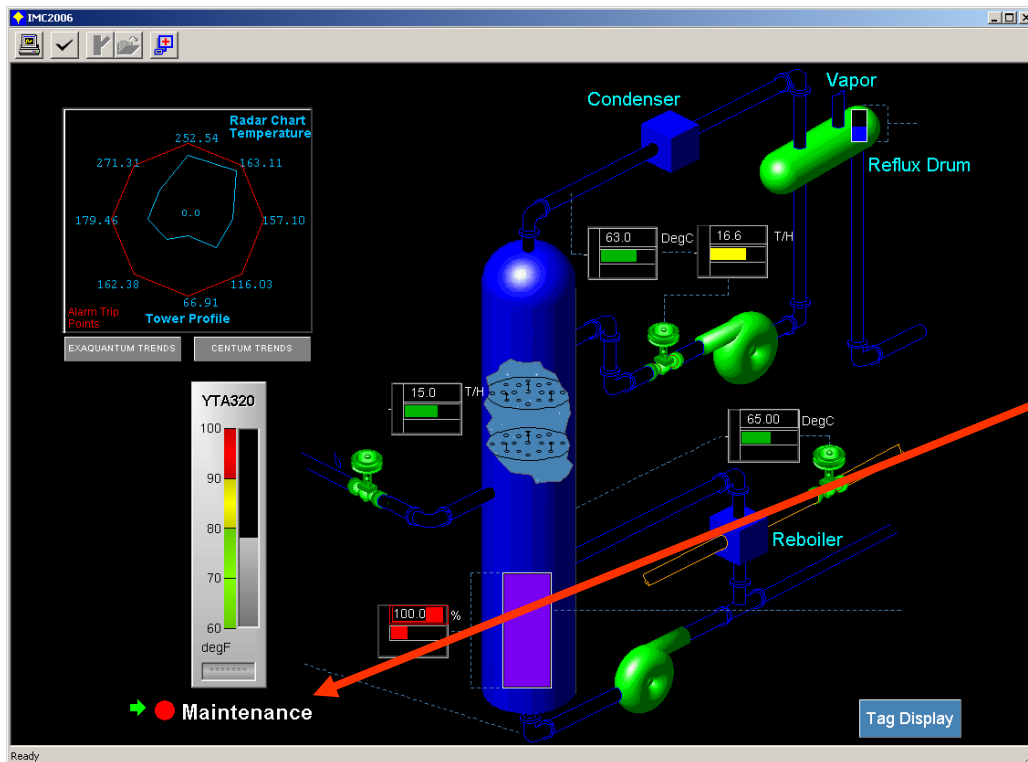
## 国際保全会議



❖ DCSのHMI上に機器が保守中であることを表示し、必要に応じて保守作業の進捗が確認できる。(A~D)

❖ 機器の故障を検知して保守作業依頼を自動的に設備保全管理システムに送る。(1~3)





DCS Graphic with  
Maintenance Work Order Status



# 機器管理システムによる機器状態の確認

Device Path: MYP-JT-9999-10111-1  
Device Tag: TT1001

Transducer Status - Error

Diagnostic Information | Trend Information

Alarm Display: AL040

Diagnostic Parameter List

- Transducer Status
- Sensor1 Failure
- Not Used Sensor1
- Not Used Sensor2
- Cannot Use Sensor2
- Illegal Sensors Type Combination
- Start Backup Mode of Channel
- Sensor1 Signal Error
- Sensor2 Failure
- Sensor2 Signal Error
- Terminal Sensor Failure
- Terminal Temp Too High
- Terminal Temp Too Low

Configuration(Mandatory)

Parameter List

Title	Parameter Name	Value	Unit	Quality
Sensor 1 Value	TB01.PRIMARY_	73.670708	Not Defined	Bad - Sensor F...
Sensor 2 Value	TB01.PRIMARY_	32.000000	Not Defined	Bad - Configur...
Terminal Temper...	TB01.SECOND_	73.134949	Not Defined	Good(NC) - No...

Device Manager  
Asset Viewer

Vapor

Reflux Drum

Reboiler

63.0 DegC

16.6 T/H

15.0 T/H

65.00 DegC

100.0 %

179.46

0.0

157.10

162.38

116.03

66.91

Alarm Trip Points

Tower Profile

EXAQUANTUM TRENDS

CENTUM TRENDS

YTA320

100

90

80

70

60

degF

Maintenance

Tag Display

# 設備保全管理システム側の保守履歴データ表示

Device Path: MYP-JT-9999-10111-1  
Device Tag: TT1001

Transducer Status: Error

Alarm Display: AL040

Diagnostic Parameter List:

- Sensor1 Failure
- Not Used Sensor1
- Not Used Sensor2
- Cannot Use Sensor2
- Illegal Sensors Type Combination
- Start Backup Mode of Channel
- Sensor1 Signal Error
- Sensor2 Failure
- Sensor2 Signal Error
- Terminal Sensor Failure
- Terminal Temp Too High
- Terminal Temp Too Low

Configuration(Mandatory)

Parameter List:

Title	Parameter Name	Value	Unit	Quality
Sensor 1 Value	TB01.PRIMARY_	73.670708	Not Defined	Bad - Sensor F...
Sensor 2 Value	TB01.PRIMARY_	32.000000	Not Defined	Bad - Configur...
Terminal Temper...	TB01.SECOND...	73.134949	Not Defined	Good(NC) - No...

DCS Work Order Viewer with EAM Data

Vapor

Reboiler

63.0 DegC, 16.6 T/H, 15.0 T/H, 65.00 DegC, 100.0 %

179.46, 0.0, 157.10, 162.38, 116.03, 66.91

Alarm Trip Points

Tower Profile

EXHAUSTANTUM TRENDS, CENTUM TRENDS

YTA320

100, 90, 80, 70, 60 degF

Maintenance

Work Order Viewer

Name : YTA320  
1 open item.

Work Order Detail

Change Status

Item	Value
Title	YTA320
Date and Time (created)	9/28/2007 2:31:26 PM
Description	InputFailure
Status	W/APPR
Date and Time (status changed)	9/28/2007 2:31:26 PM
Priority	
Work Management Type	CM
Issued by	MteICBM

Open Items

Title	Time	Description
YTA320	9/28/2007 2:31:26 PM	InputFailure

History

Title	Time	Description
YTA320	9/28/2007 2:09:34 PM	InputFailure
YTA320	9/28/2007 2:03:38 PM	InputFailure
YTA320	9/28/2007 11:35:58 AM	InputFailure
YTA320	9/28/2007 10:34:57 AM	InputFailure
YTA320	9/28/2007 9:43:06 AM	InputFailure
YTA320	9/28/2007 9:14:48 AM	InputFailure
YTA320	9/28/2007 9:08:56 AM	InputFailure

1 item.



# 設備保全管理システムの保守作業詳細画面呼び出し

Title	Parameter Name	Value	Unit	Quality
Sensor 1 Value	TB01.PRIMARY_	73.670708	Not Defined	Bad - Sensor F...
Sensor 2 Value	TB01.PRIMARY_	32.000000	Not Defined	Bad - Configur...
Terminal Temper...	TB01.SECOND...	73.134949	Not Defined	Good(NC) - No...

Title	Time	Description
YTA320	9/28/2007 2:31:26 PM	InputFailure

Title	Time	Description
YTA320	9/28/2007 2:09:34 PM	InputFailure
YTA320	9/28/2007 2:03:38 PM	InputFailure
YTA320	9/28/2007 11:35:58 AM	InputFailure
YTA320	9/28/2007 10:34:57 AM	InputFailure
YTA320	9/28/2007 9:43:06 AM	InputFailure
YTA320	9/28/2007 9:14:48 AM	InputFailure
YTA320	9/28/2007 9:08:56 AM	InputFailure

ご清聴ありがとうございました



**Commitment means building the future to last**